

FOR LEASE | INDUSTRIAL  
**1615 VENABLES STREET**  
VANCOUVER, BC

**LEE &  
ASSOCIATES**  
COMMERCIAL REAL ESTATE SERVICES



- ▶ **8,692 SF Freestanding Office/Showroom/Warehouse Building**
- ▶ **Grade and Dock Loading**
- ▶ **Exposure Location**

**Chris McIntyre**

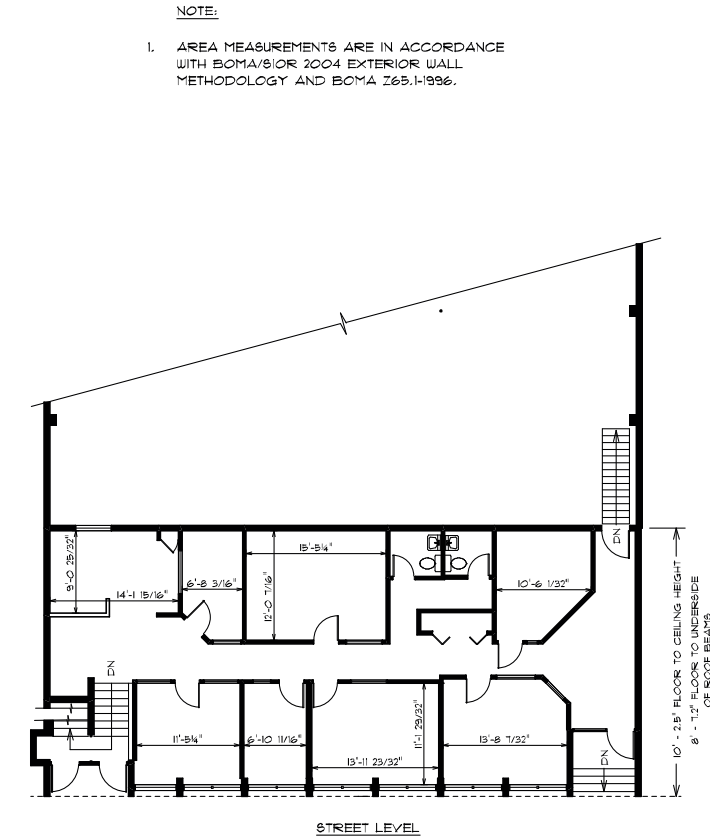
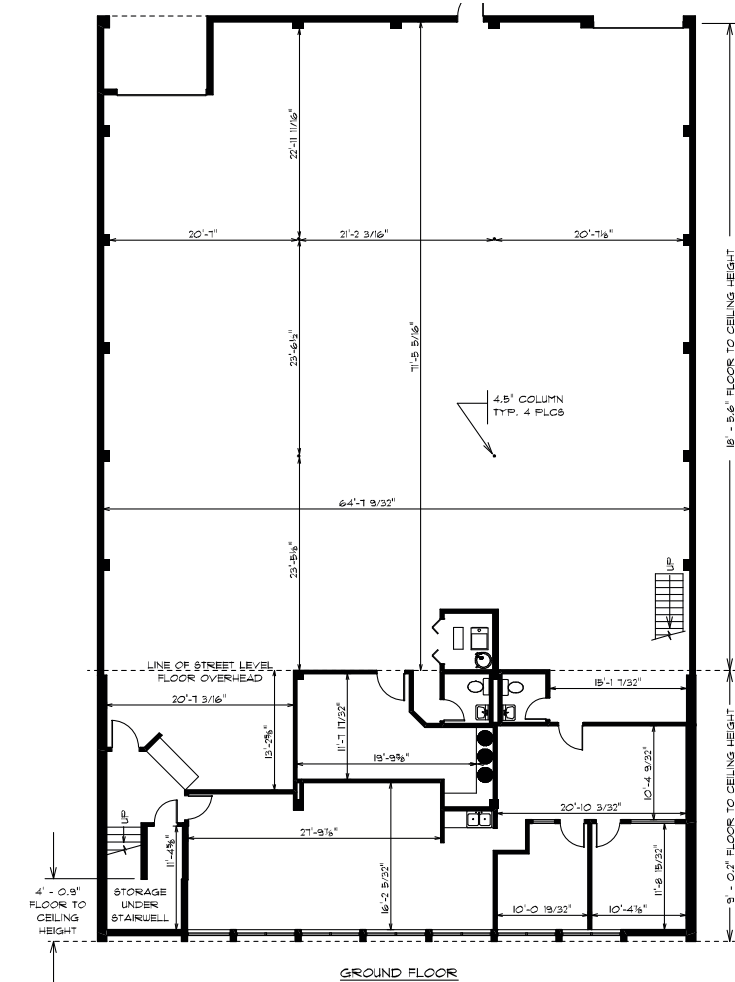
*Personal Real Estate Corporation*

D 604.630.3392 C 604.889.0699

chris.mcintyre@lee-associates.com



**Floor Plans**



**Location**

The property is situated just off the northeast corner of Woodland Drive and Venables Street, just east of Clark Drive. This unique area is home to many service-oriented businesses, wholesaling and showroom/warehouse operations. This location offers excellent access to Downtown Vancouver and fantastic nearby local restaurants and breweries.

**Features**

- ▶ Exposure location
- ▶ Grade and dock loading
- ▶ 16' ceiling height in warehouse (approx)
- ▶ Showroom and modern offices
- ▶ HVAC Offices
- ▶ Concrete block construction
- ▶ Parking stalls available at the rear
- ▶ Signage available
- ▶ Gas-forced air heating
- ▶ Boardroom and lunchroom areas
- ▶ Natural light/windows in warehouse area

**Zoning**

I-2 (Light Industrial)

**Available Areas**

Street level office/showroom	1,972 SF
Ground floor office	1,120 SF
Ground floor warehouse/storage	5,600 SF
<b>Total</b>	<b>8,692 SF</b>

**Basic Lease Rate**

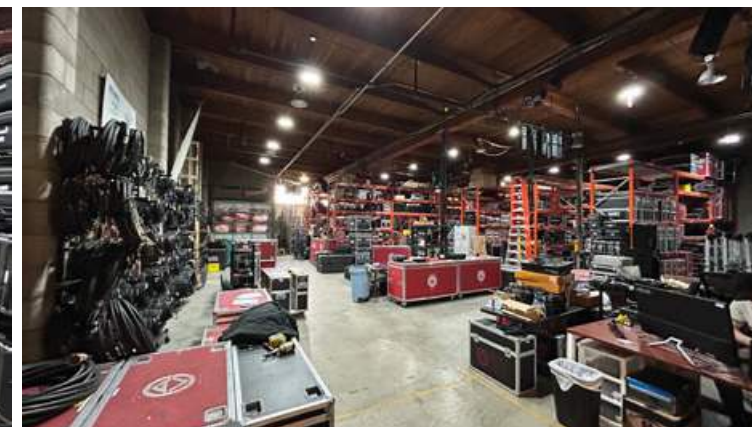
\$23.00 PSF

**Taxes & Operating Costs**

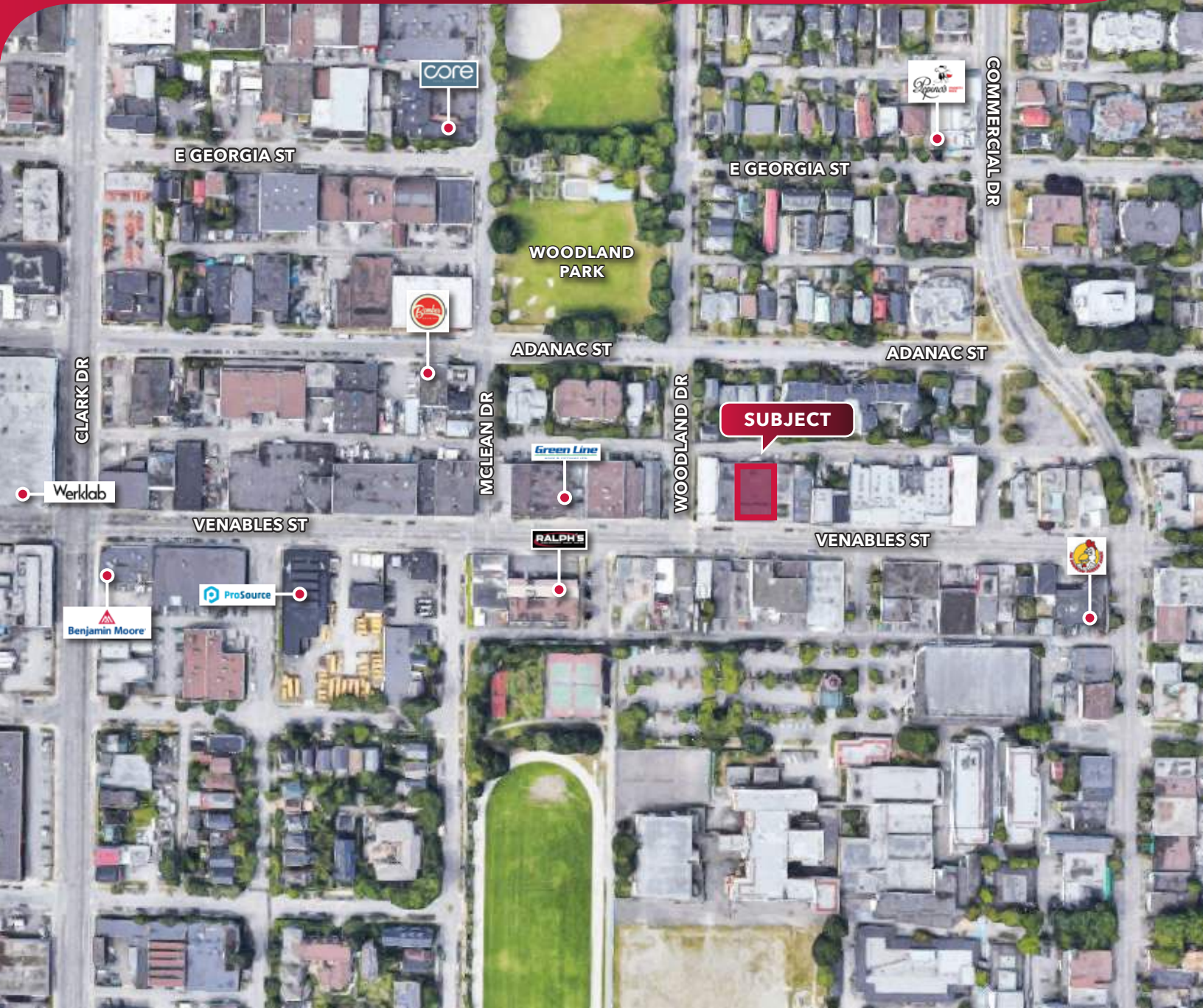
\$8.85 PSF (2024 estimate)

**Availability**

January 1, 2025



FOR LEASE | INDUSTRIAL  
1615 VENABLES STREET  
VANCOUVER, BC



**Chris McIntyre**

Personal Real Estate Corporation  
D 604.630.3392 C 604.889.0699  
chris.mcintyre@lee-associates.com

© 2024 Lee & Associates Commercial Real Estate (BC) Ltd. ("Lee & Associates Vancouver"). All Rights Reserved. 927. E. & O.E.: Although the information contained within is from sources believed to be reliable, no warranty or representation is made by Lee & Associates Vancouver as to its accuracy being subject to errors, omissions, conditions, prior lease, withdrawal or other changes without notice and same should not be relied upon without independent verification.

