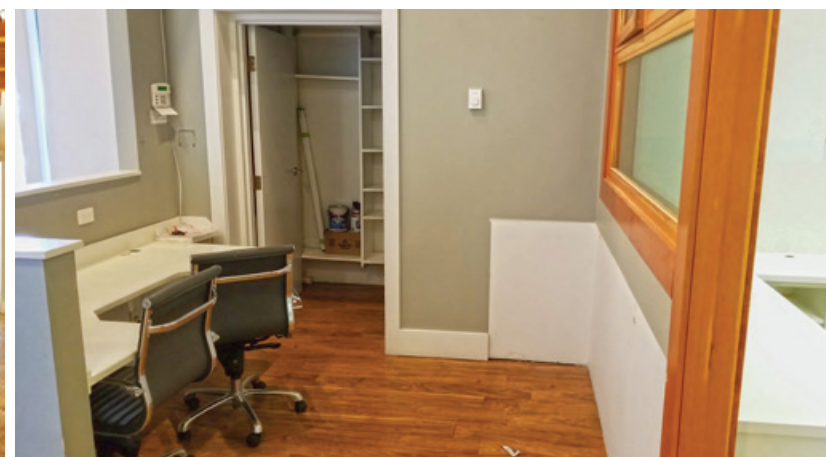


FOR LEASE | INDUSTRIAL
1910 ONTARIO STREET
VANCOUVER, BC

LEE & ASSOCIATES
COMMERCIAL REAL ESTATE SERVICES



- ▶ **2,789 SF Showroom/Office/Warehouse**
- ▶ **Corner Location with Great Exposure on Ontario Street**
- ▶ **Recent Upgrades**

Location

Located at the corner of East 3rd Avenue and Ontario Street. This unique area is home to many service oriented businesses, wholesaling and high tech operations. This location offers excellent access to Downtown Vancouver and fantastic nearby amenities.

Ryan Saunders

Personal Real Estate Corporation
D 604.630.3384 C 604.760.8799
ryan.saunders@lee-associates.com

Mitch Ellis

D 604.630.3383 C 604.729.7699
mitch.ellis@lee-associates.com



Zoning

I-1 (Light Industrial District) allows for most manufacturing, ancillary retail use, software manufacturing, video and film production, showroom, storage, wholesaling, distribution, office and some service-based businesses

Features

- ▶ 1 grade level roll-up loading door
- ▶ Private washroom
- ▶ 10' ceiling height (approx.)
- ▶ Newly renovated
- ▶ Partially air-conditioned
- ▶ Exposed wooden beams
- ▶ Ample natural light
- ▶ Private offices
- ▶ Open work stations
- ▶ Kitchen area

Available Area

2,789 SF showroom/office/
warehouse space

**All measurements are approximate and must be verified by the tenant*

Parking

Available at market rates

Lease Rate

\$28.00 PSF

CAM & Property Tax

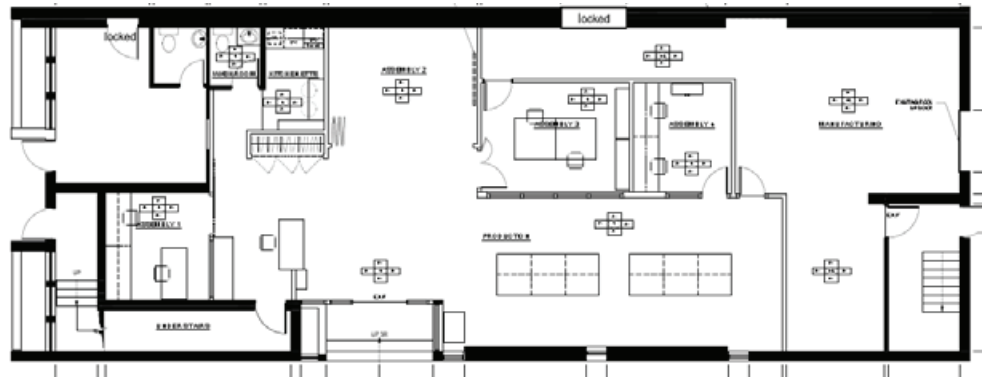
\$19.74 PSF (2024 estimate)

Availability

Immediate

Lease Term

3 to 5 years or longer



Ryan Saunders

Personal Real Estate Corporation
D 604.630.3384 C 604.760.8799
ryan.saunders@lee-associates.com

Mitch Ellis

D 604.630.3383 C 604.729.7699
mitch.ellis@lee-associates.com