

FOR SALE | RETAIL STRATA

220 LONSDALE AVENUE
NORTH VANCOUVER, BC

**LEE &
ASSOCIATES**
COMMERCIAL REAL ESTATE SERVICES



James Bayley

Personal Real Estate Corporation
D 604.630.3385 C 604.719.4583
james.bayley@lee-associates.com

Arash Rezai

Personal Real Estate Corporation
D 604.630.3406 C 604.356.2356
arash.rezai@lee-associates.com

FOR SALE

220 LONSDALE AVENUE, NORTH VANCOUVER, BC

THE OPPORTUNITY

Lee & Associates Vancouver is proud to present the exclusive opportunity to acquire a renovated strata retail property on the highly coveted Lonsdale Avenue with exceptional exposure in one of the most popular neighborhoods in North Vancouver.

SALIENT DETAILS

Civic Address	220 Lonsdale Avenue, North Vancouver, BC
Legal Description	STRATA LOT 64, PLAN EPS1235, DISTRICT LOT 274, GROUP 1
Current Zoning	CD-599
Year Built	2013
Area	1,820 SF
Strata Fees	\$1,349.21 per month
Property Taxes	\$23,708.21 (2025)
Asking Price	\$2,550,000



INVESTMENT HIGHLIGHTS

- » Prime location in Lower Lonsdale
- » 2 secured underground parking stalls
- » End-of-trip facilities within complex
- » Vacant possession
- » Customer parking at rear
- » Exceptional renovations (turn-key)
- » Transit-friendly location with bus stop just steps from the entrance



FOR SALE

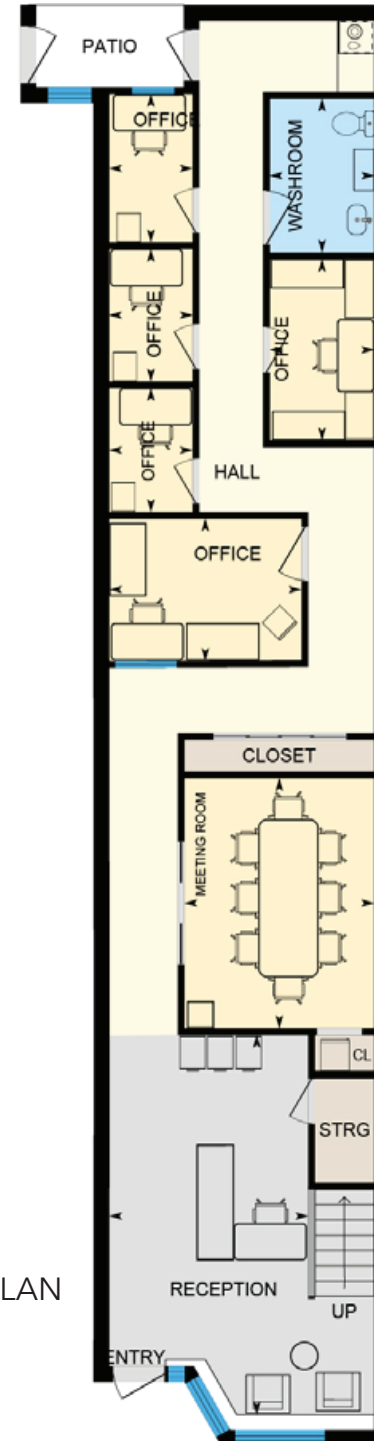
220 LONSDALE AVENUE, NORTH VANCOUVER, BC



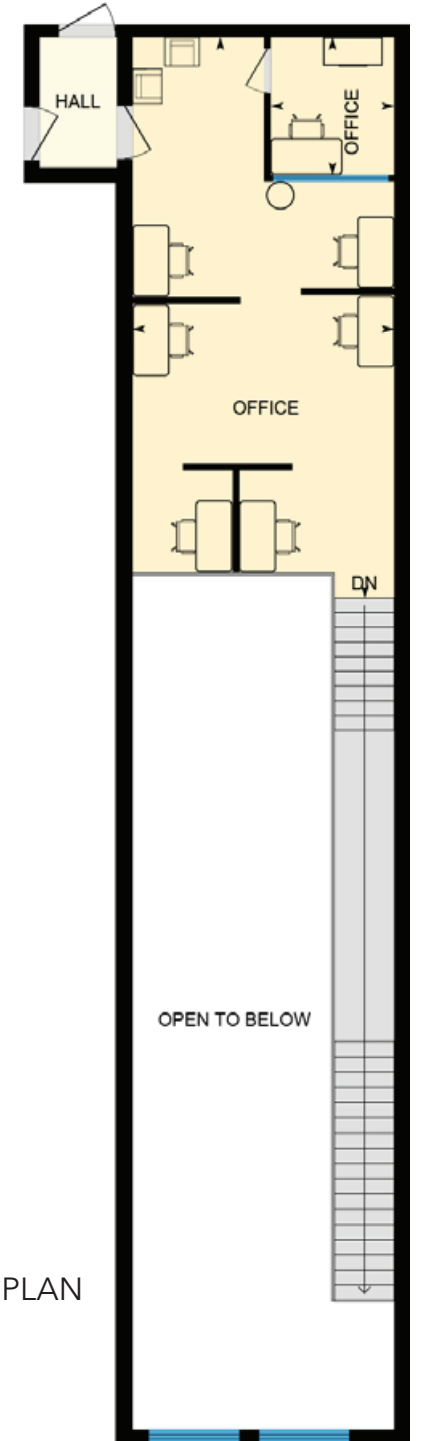
EXPLORE THE PROPERTY [↗](#)

Take a virtual tour of the space.

MAIN FLOOR PLAN



SECOND FLOOR PLAN



LOCATION

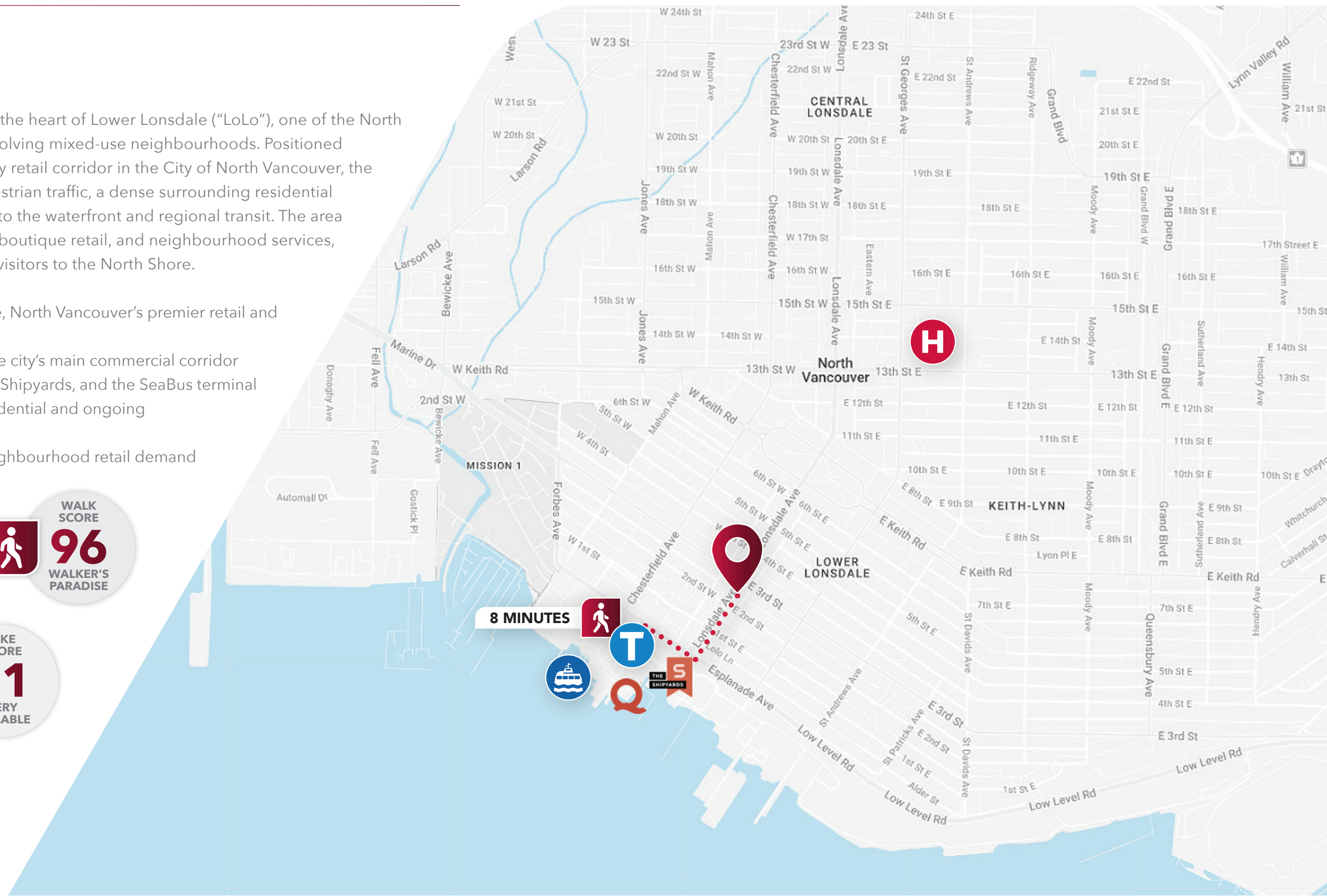
220 Lonsdale Avenue is situated in the heart of Lower Lonsdale (“LoLo”), one of the North Shore’s most vibrant and rapidly evolving mixed-use neighbourhoods. Positioned along Lonsdale Avenue, the primary retail corridor in the City of North Vancouver, the property benefits from strong pedestrian traffic, a dense surrounding residential population, and immediate access to the waterfront and regional transit. The area is a premier destination for dining, boutique retail, and neighbourhood services, attracting both local residents and visitors to the North Shore.

- » Prime location in Lower Lonsdale, North Vancouver’s premier retail and lifestyle district
- » Situated on Lonsdale Avenue, the city’s main commercial corridor
- » Walkable to Lonsdale Quay, The Shipyards, and the SeaBus terminal
- » Surrounded by high-density residential and ongoing development
- » Strong pedestrian traffic and neighbourhood retail demand

WALK SCORE
96
WALKER'S PARADISE

BIKE SCORE
71
VERY BIKEABLE

TRANSIT SCORE
63
GOOD TRANSIT



FOR SALE | RETAIL STRATA

220 LONSDALE AVENUE
NORTH VANCOUVER, BC

**LEE &
ASSOCIATES**
COMMERCIAL REAL ESTATE SERVICES



James Bayley

Personal Real Estate Corporation
D 604.630.3385 C 604.719.4583
james.bayley@lee-associates.com

Arash Rezai

Personal Real Estate Corporation
D 604.630.3406 C 604.356.2356
arash.rezai@lee-associates.com

© 2026 Lee & Associates Commercial Real Estate (BC) Ltd. ("Lee & Associates Vancouver"). All Rights Reserved. 513. E. & O.E.: Although the information contained within is from sources believed to be reliable, no warranty or representation is made by Lee & Associates Vancouver as to its accuracy being subject to errors, omissions, conditions, prior lease, withdrawal or other changes without notice and same should not be relied upon without independent verification.



475 West Georgia Street, Suite 800 | Vancouver, BC V6B 4M9 | 604.684.7117 | leevancouver.com

