

FOR SUBLEASE | OFFICE
520 - 580 HORNBY STREET
VANCOUVER, BC



- ▶ **Office Sublease In Move-In Condition**
- ▶ **2,183 SF**

Location

The building is located in the Downtown Vancouver financial core, one block from Pacific Centre, Bentall Centre and Burrard SkyTrain station. Situated between Dunsmuir and Pender Street, this building is within walking distance to amenities, hotels, restaurants, shopping malls, cafés and the Vancouver Convention Centre.

Highlights

- ▶ Elevator exposure
- ▶ Meeting room
- ▶ Seven (7) private offices
- ▶ Kitchen plus storage

Jason Marriott
Associate Vice President | Office Properties
D 604.630.3394 C 604.551.0409
jason.marriott@lee-associates.com

Zoning

DD (Downtown District)

Sublease Rate

Contact listing agent

Subleasing Term

February 29, 2020 (longer term negotiable)

Available Area

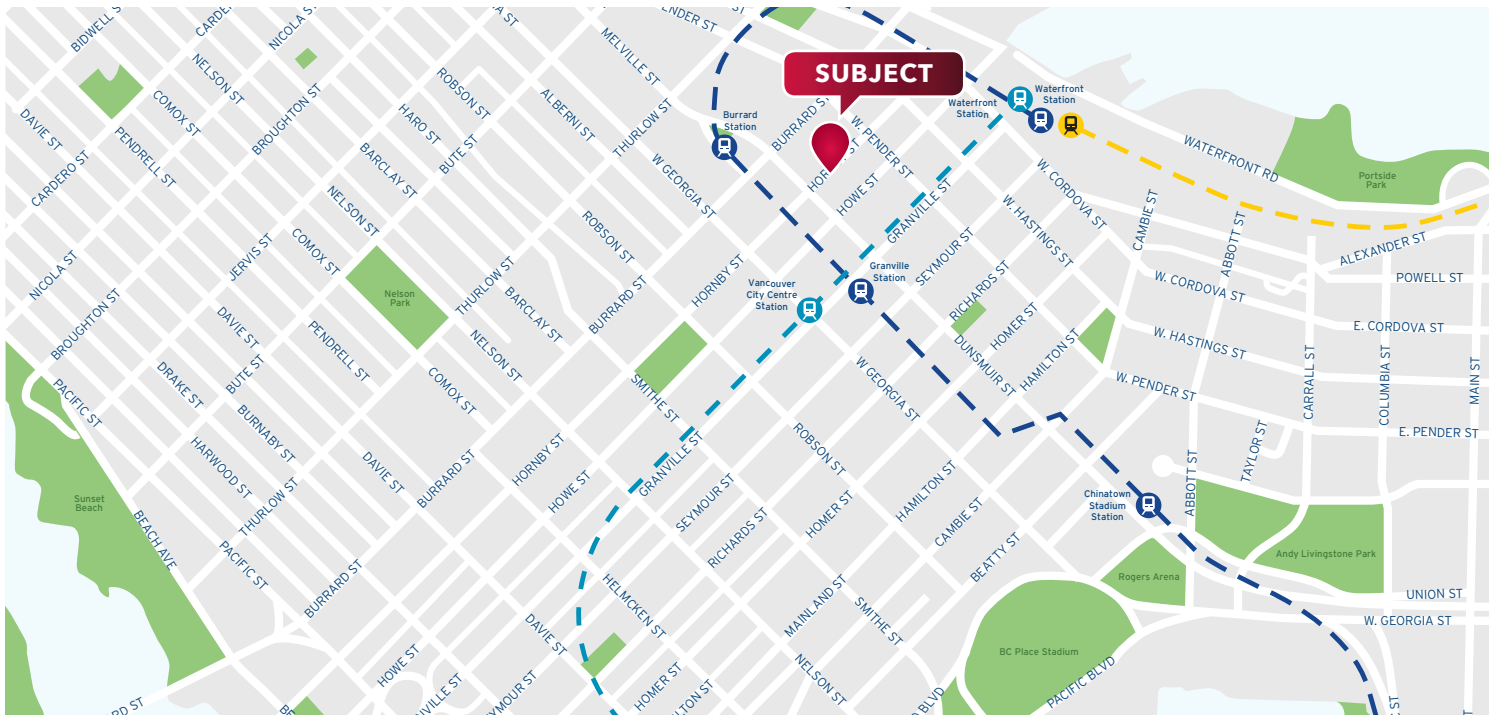
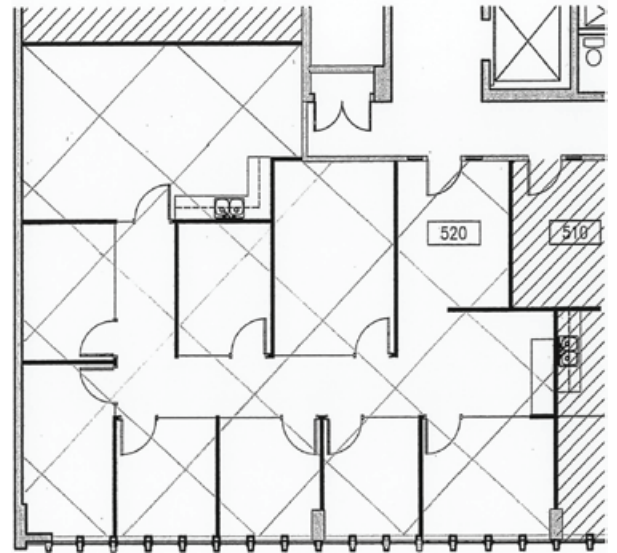
2,183 SF

Taxes & Operating Costs (2019)

\$18.70 PSF

Availability

Immediately



Disclaimer: Although the information contained within is from sources believed to be reliable, no warranty or representation is made as to its accuracy being subject to errors, omissions, conditions, prior lease, withdrawal or other changes without notice and same should not be relied upon without independent verification. © Lee & Associates Commercial Real Estate (BC) Ltd. All Rights Reserved. 03/01/19.