

FOR LEASE | RETAIL
1661 EAST HASTINGS STREET
VANCOUVER, BC

LEE & ASSOCIATES
COMMERCIAL REAL ESTATE SERVICES



- ▶ **Approximately 5,664 SF**
- ▶ **Storefront with Storage**
- ▶ **Short-Term Tenancy Opportunity**

Don Mussenden
D 604.630.3373 C 604.724.0700
don.mussenden@lee-associates.com

Mitch Ellis
D 604.630.3383 C 604.729.7699
mitch.ellis@lee-associates.com

Ryan Saunders
Personal Real Estate Corporation
D 604.630.3384 C 604.760.8799
ryan.saunders@lee-associates.com

FOR LEASE | RETAIL

1661 EAST HASTINGS STREET

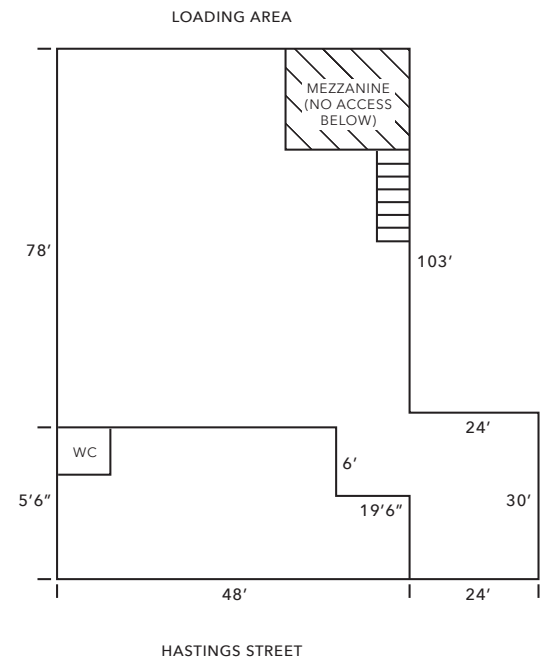
VANCOUVER, BC

Location

The subject property is located on the north side of East Hastings Street between Commercial Drive and Woodland Drive. Only two kilometres from the Downtown Core, the property is centrally located in the rapidly transforming Grandview-Woodland neighbourhood which is adjacent to the vibrant Commercial Drive neighbourhood. Major tenants in the area include No Frills, Yolks, Dollarama, Life Labs, The Waldorf, and Gourmet Warehouse.

Features

- ▶ 18' ceilings
- ▶ Storefront showroom
- ▶ Rear parking
- ▶ Loading off lane
- ▶ Key Hastings & Commercial Drive location



Available Area (Approx.)

Ground floor	5,164 SF
Mezzanine	500 SF
Total	5,664 SF

**Not to scale – all measurements to be verified.*

Zoning

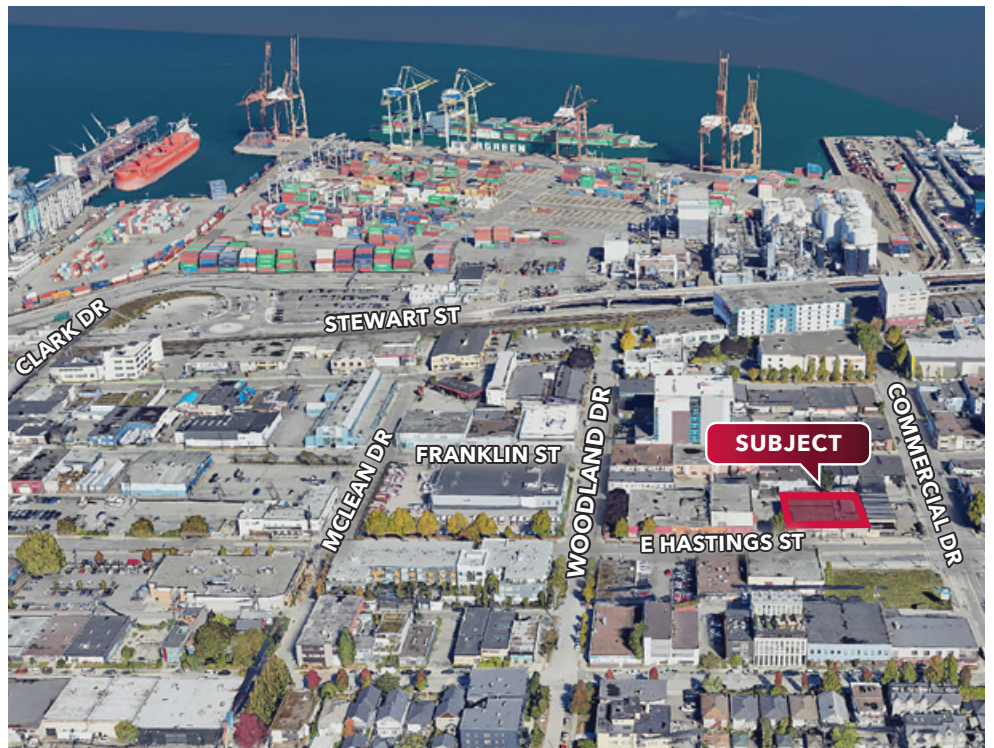
MC-2

Monthly Rent

\$7,000 per month (gross) plus utilities and GST. Annual property tax and operational cost.

Availability

Immediate



Don Mussenden

D 604.630.3373 C 604.724.0700
don.mussenden@lee-associates.com

Mitch Ellis

D 604.630.3383 C 604.729.7699
mitch.ellis@lee-associates.com

Ryan Saunders

Personal Real Estate Corporation
D 604.630.3384 C 604.760.8799
ryan.saunders@lee-associates.com