

FOR LEASE | RETAIL
UNIT 2 - 1830 WEST 4TH AVENUE
VANCOUVER, BC

**LEE &
ASSOCIATES**
COMMERCIAL REAL ESTATE SERVICES

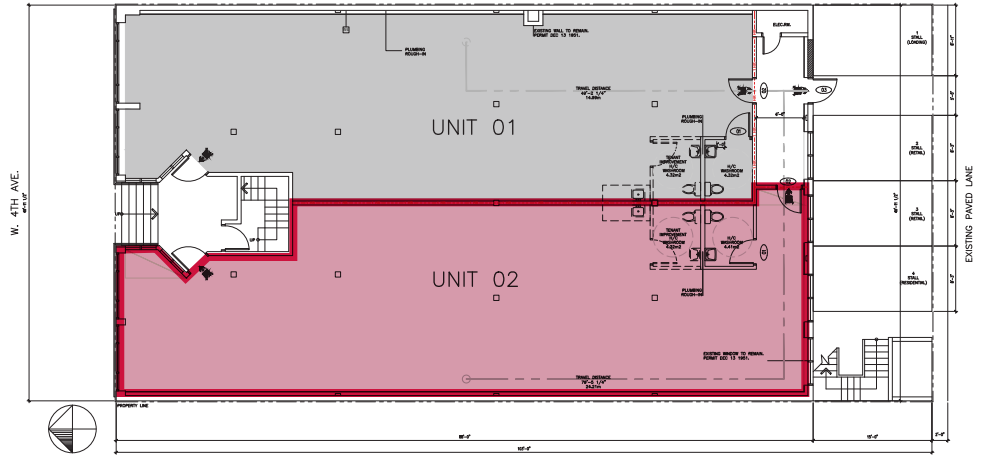


- ▶ **1,890 SF Walk-Up Retail Unit**
- ▶ **High Profile Location**

Russell Long, BA, DULE
D 604.630.3059 C 604.354.8845
russell.long@lee-associates.com

Howard Malchy
Personal Real Estate Corporation
D 604.895.2226 C 604.727.7117
howard.malchy@lee-associates.com

FOR LEASE | RETAIL
UNIT 2 - 1830 WEST 4TH AVENUE
VANCOUVER, BC



Available Area

1,890 SF

Lease Rate

\$40.00 PSF NNN

Taxes & CAM

\$21.50 PSF (2024 estimate)

Availability

Immediate

Features

- ▶ Walk-up retail with high ceilings
- ▶ Fully renovated new vanilla shell space
- ▶ High profile West 4th location
- ▶ Rear surface parking

Location

The available walk-up-retail unit is located along West 4th Avenue, between Burrard Street and Cypress Street in Vancouver's trendy Kitsilano neighbourhood. Locally known as Kits, this neighbourhood has premier restaurants and extensive retail along West 4th Avenue and West Broadway. Kitsilano runs along the south shore of English Bay, between popular Granville Island and Point Grey.



Russell Long, BA, DULE

D 604.630.3059 C 604.354.8845
russell.long@lee-associates.com

Howard Malchy

Personal Real Estate Corporation

D 604.895.2226 C 604.727.7117

howard.malchy@lee-associates.com