

FOR LEASE | OFFICE  
**1687 & 1695 WEST 2ND AVENUE**  
VANCOUVER, BC



- High Exposure Corner Location
- Ideal for Automotive or Home Improvement Businesses



**Howard Malchy**  
Personal Real Estate Corporation  
D 604.895.2226 C 604.727.7117  
howard.malchy@lee-associates.com



**Cheryl MacKenzie**  
Personal Real Estate Corporation  
C 604.761.0209  
cheryl3656@gmail.com





Location

The subject property has a corner location at the northeast corner of West 2nd Avenue and Pine Street in the Burrard slopes area of Vancouver. It is a short walk from Granville Island and a five-minute drive from the Downtown Core.

Building Description

The subject property comprises two buildings. 1687 West 2nd Avenue (easternmost building) is a single storey, high ceiling building with a mezzanine office component along West 2nd. 1695 West 2nd Avenue (westernmost building) is a two-storey building with a finished office component at the south end of the second floor. Entryways have been created between the two buildings’ exterior walls, so there is direct access. There is a significant amount of open, unfinished mezzanine space in 1687 West 2nd Avenue that is not included in the leasable area and is currently being used for storage.

Features

- ▶ High exposure corner location
- ▶ Gas-fired hot air heating
- ▶ Concrete block/brick
- ▶ Two (2) automated, metal rear bay loading doors
- ▶ Flat tar and gravel roof
- ▶ 25 foot ceilings
- ▶ High intensity lighting
- ▶ Ceiling fans
- ▶ Staff lounge/lunchroom
- ▶ Seven (7) parking stalls

Zoning

IC - 1

Available Areas

1687 WEST 2ND AVENUE	
Main floor	4,916 SF
Second floor	1,274 SF
Total	6,190 SF

1695 WEST 2ND AVENUE	
Main floor	5,173 SF
Second floor	4,553 SF
Total	9,626 SF

COMBINED TOTAL	15,816 SF
----------------	-----------

1687 and 1695 West 2nd can be leased separately.

Basic Lease Rate

Contact listing agents

Taxes & Operating Costs

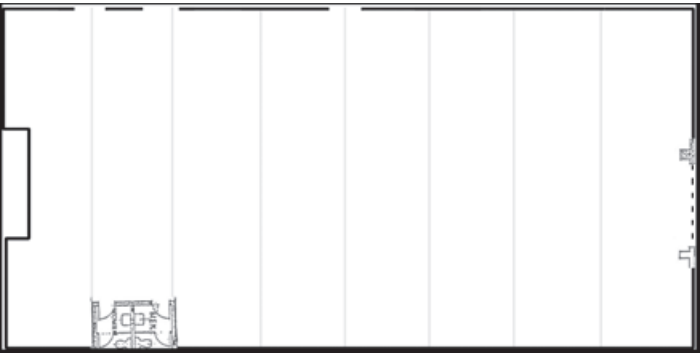
Contact listing agents

Availability

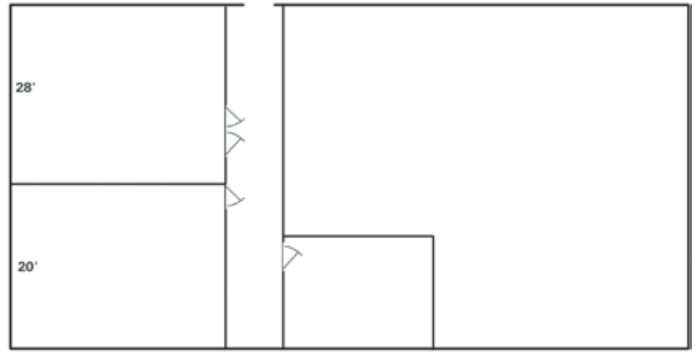
Immediate

1687 West 2nd Avenue Floor Plans

MAIN FLOOR:  
4,916 SF  
1 grade loading door

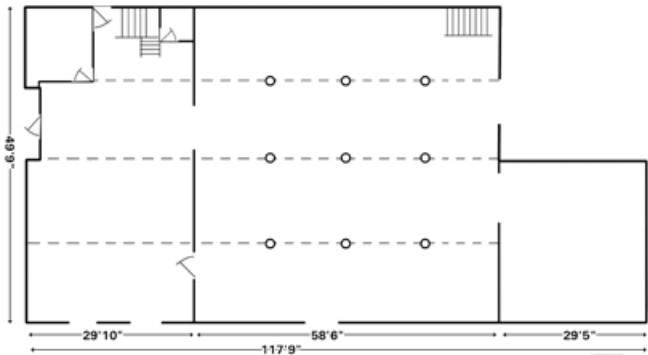


SECOND FLOOR:  
1,274 SF  
4 built out offices

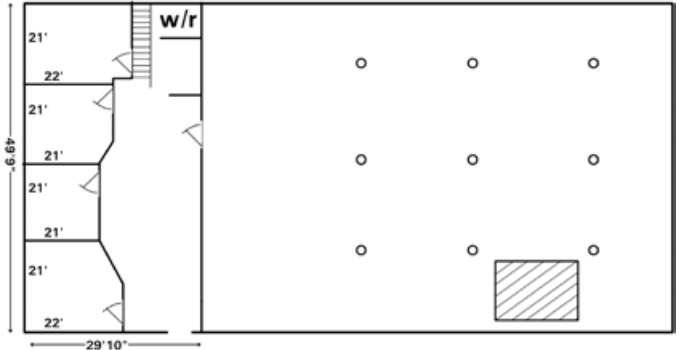


1695 West 2nd Avenue Floor Plans

MAIN FLOOR:  
5,173 SF  
2 grade loading doors  
3 passageways to 1687 West 2nd Ave  
2 stairways



SECOND FLOOR:  
4,553 SF  
2 built-out offices  
Storage space





AMES  
TILE & STONE

ANN SACKS

CREATIVE HOME  
furnishings



Rēdi  
KITCHEN  
STUDIO INC

Reckless  
REAL ESTATE

AURELIA



East India Carpets

stone tile

LIVINGSPACE

brougham  
interiors

THE  
ARMOURY  
DISTRICT  
TheArmouryDistrict.com



LEE &  
ASSOCIATES  
COMMERCIAL REAL ESTATE SERVICES

Howard Malchy  
Personal Real Estate Corporation  
D 604.895.2226 C 604.727.7117  
howard.malchy@lee-associates.com

TRG  
COMMERCIAL

Cheryl MacKenzie  
Personal Real Estate Corporation  
C 604.761.0209  
cheryl3656@gmail.com

© 2025 Lee & Associates Commercial Real Estate (BC) Ltd. ("Lee & Associates Vancouver"). All Rights Reserved. 221. E. & O.E.: Although the information contained within is from sources believed to be reliable, no warranty or representation is made by Lee & Associates Vancouver as to its accuracy being subject to errors, omissions, conditions, prior lease, withdrawal or other changes without notice and same should not be relied upon without independent verification.

CELEBRATING OVER  
50  
YEARS IN VANCOUVER

475 West Georgia Street, Suite 800 | Vancouver, BC V6B 4M9 | 604.684.7117 | leevancouver.com

