

FOR SALE | LAND
2939 224 STREET
LANGLEY, BC

**LEE &
ASSOCIATES**
COMMERCIAL REAL ESTATE SERVICES



► **39.5 Acres Vacant Land in Langleys Agricultural Region**

James Bayley

Personal Real Estate Corporation

D 604.630.3385 C 604.719.4583

james.bayley@lee-associates.com

Sebastian Espinosa CCIM, SIOR

Personal Real Estate Corporation

D 604.630.3396 C 604.783.8139

sebastian.espinosa@lee-associates.com



Location

The site is located just minutes from Fraser Highway and other key Langley thoroughfares, providing convenient access to nearby amenities in Langley City, Aldergrove, and beyond. Surrounded by established farms and natural beauty, it's an ideal setting for agricultural pursuits, country living, or a combination of both. An incredible opportunity to own prime farmland in one of British Columbia's most sought-after rural communities.

Zoning

RU-3 (Rural Zone) and situated in the ALR (Agricultural Land Reserve), this property offers abundant opportunities for a variety of agricultural uses, set against a peaceful rural backdrop.

Legal Description

NORTH HALF OF THE SOUTH
HALF OF THE NORTH EAST
QUARTER SECTION 19
TOWNSHIP 10 EXCEPT: THE
WESTERLY 33 FEET, NEW
WESTMINSTER DISTRICT

PID

013-261-371

Features

- ▶ Relatively flat lot
- ▶ Services at lot line
- ▶ Approximately 650' frontage on 224th Street

Lot Size

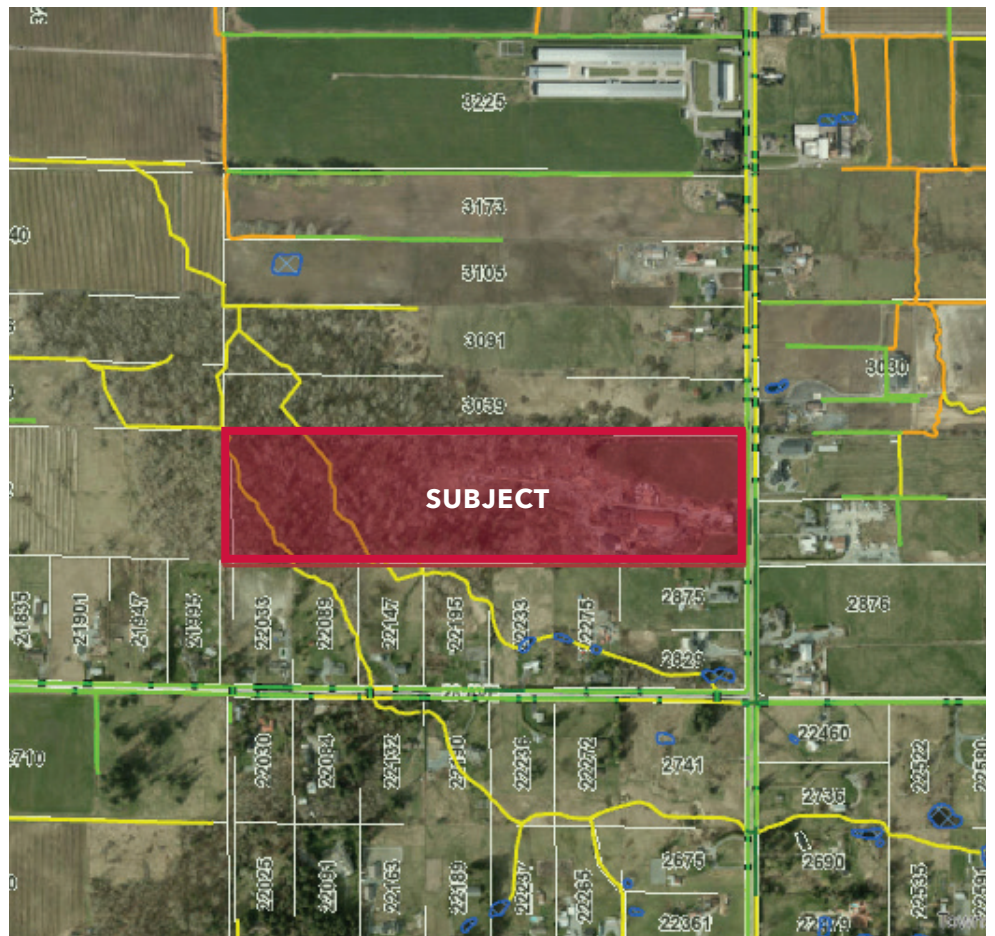
39.5 acres

Gross Property Taxes

\$5,687.16 (2024)

Asking Price

\$4,100,000



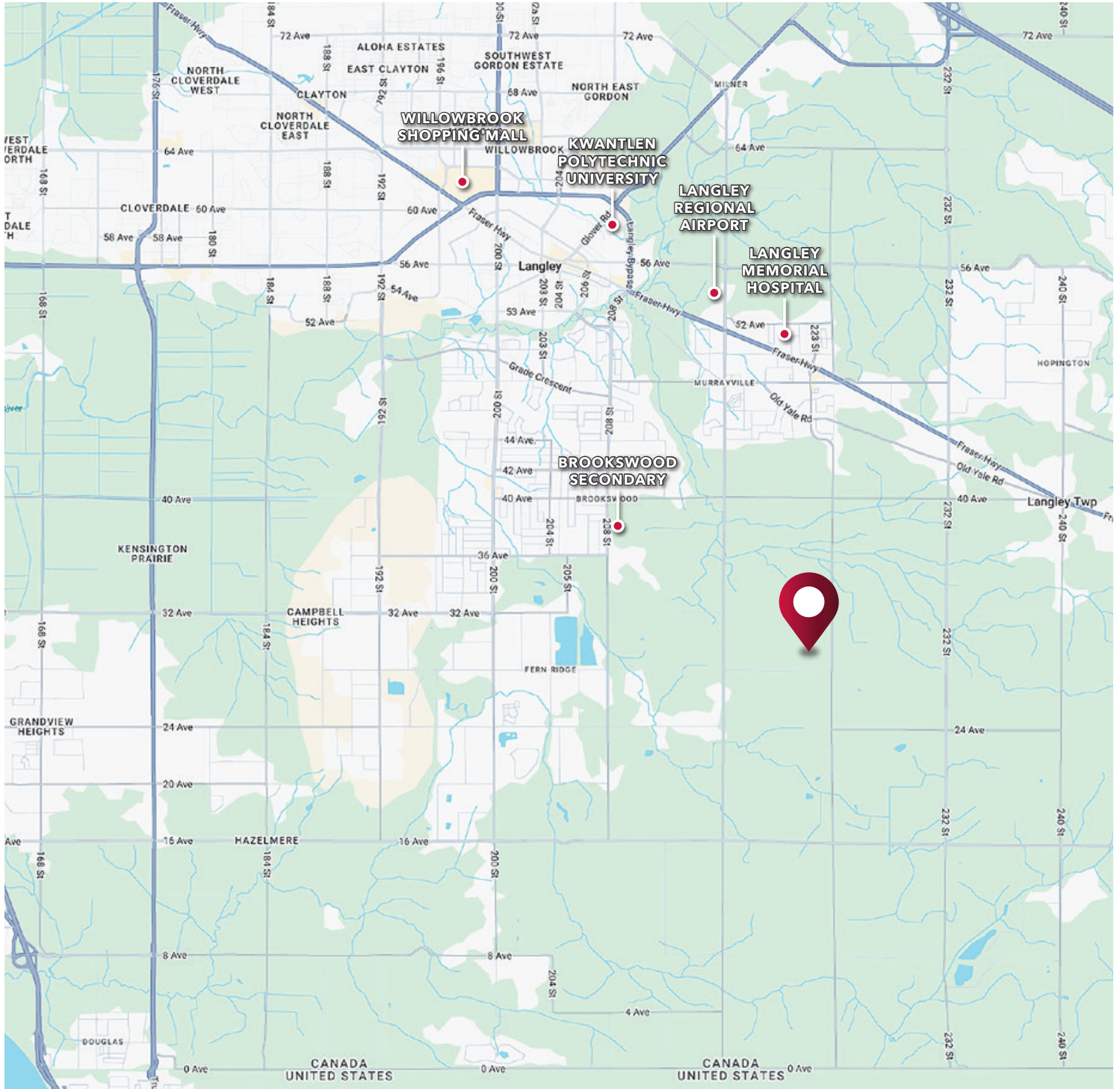
James Bayley

Personal Real Estate Corporation
D 604.630.3385 C 604.719.4583
james.bayley@lee-associates.com

Sebastian Espinosa CCIM, SIOR

Personal Real Estate Corporation
D 604.630.3396 C 604.783.8139
sebastian.espinosa@lee-associates.com

FOR SALE | LAND
2939 224 STREET
LANGLEY, BC



James Bayley
Personal Real Estate Corporation
D 604.630.3385 C 604.719.4583
james.bayley@lee-associates.com

Sebastian Espinosa CCIM, SIOR
Personal Real Estate Corporation
D 604.630.3396 C 604.783.8139
sebastian.espinosa@lee-associates.com